



Theory of Action



The Coalition for an
Accessible and
Resilient Edmonds



the **Coalition** for an
Accessible and
Resilient Edmonds!

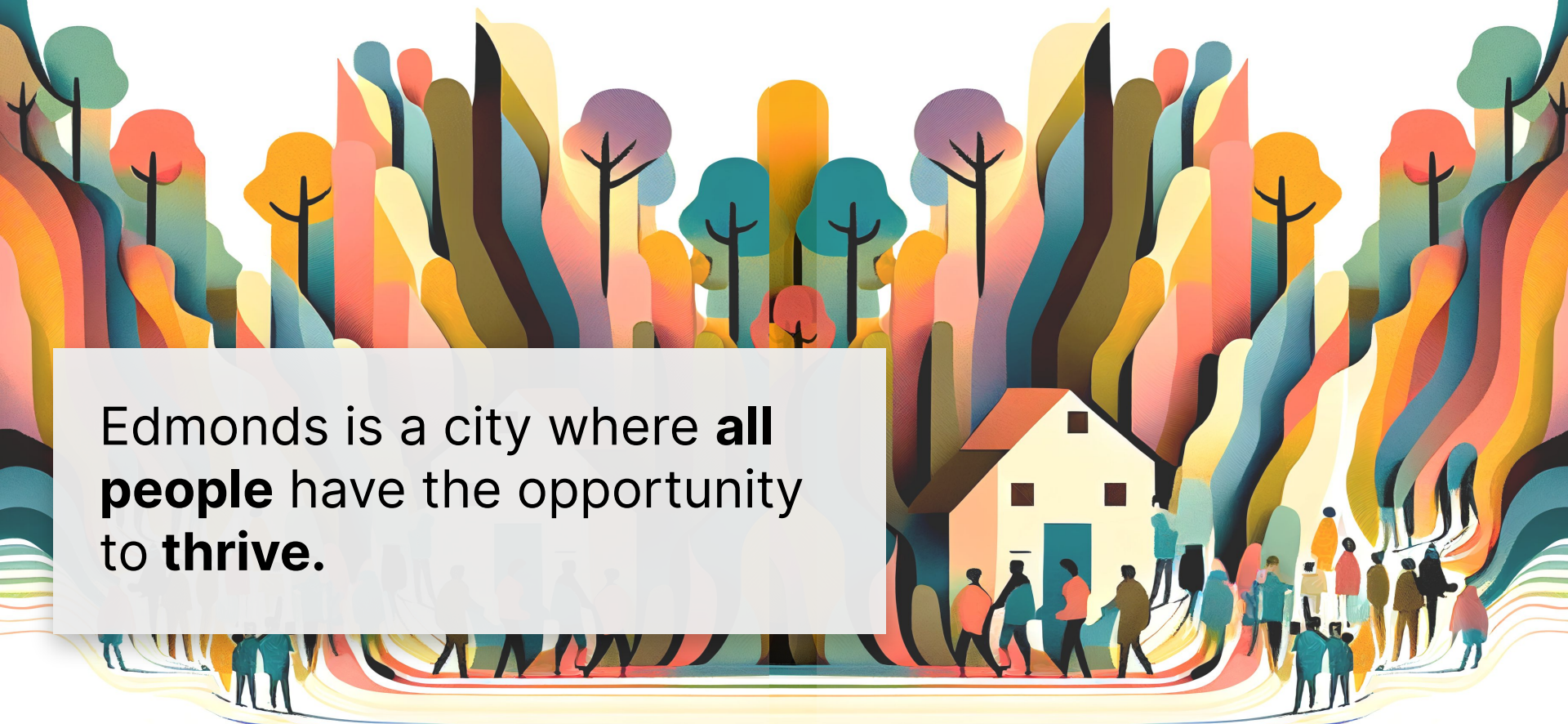
CARE works to create a more **sustainable, equitable, and prosperous** Edmonds through advocacy, leadership development, and political action.



Mission



The **Coalition** for an
**Accessible and
Resilient Edmonds**



Edmonds is a city where **all people** have the opportunity to **thrive**.

Vision



The Coalition for an
Accessible and
Resilient Edmonds

Where does Edmonds succeed?



The **Coalition** for an
Accessible and
Resilient Edmonds

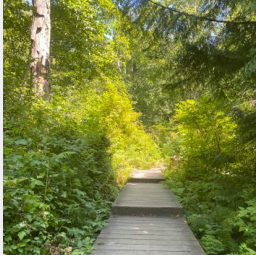
Where does Edmonds succeed?



Resident
stakeholdership



Small-town charm



Connection to nature



Public amenities



The **Coalition** for an
Accessible and
Resilient Edmonds

Where does
Edmonds stand
to improve?



The Coalition for an
Accessible and
Resilient Edmonds

Where does Edmonds stand to improve?

Racial &
socioeconomic
diversity

Public schools

Accessibility

Housing affordability



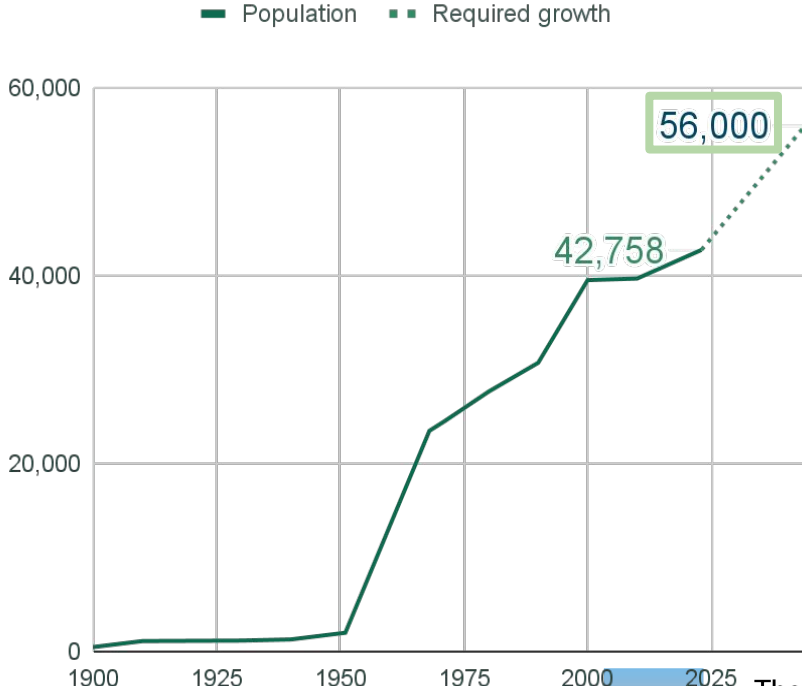
The **Coalition** for an
Accessible and
Resilient Edmonds

Preparing for growth

~14,000 new neighbors!

by 2044 (allocated by Snohomish County Tomorrow)

Where can we improve?

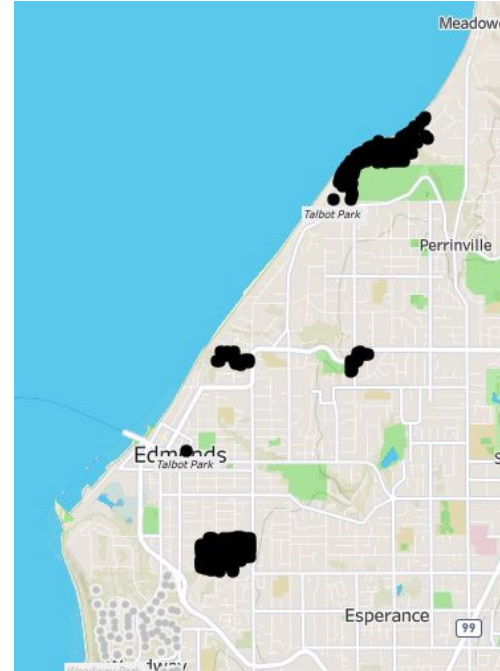


Racial, ethnic & socioeconomic diversity

30% of Edmonds homes restricted to white occupancy

by 1950

Where can we improve?



Properties with racial covenants



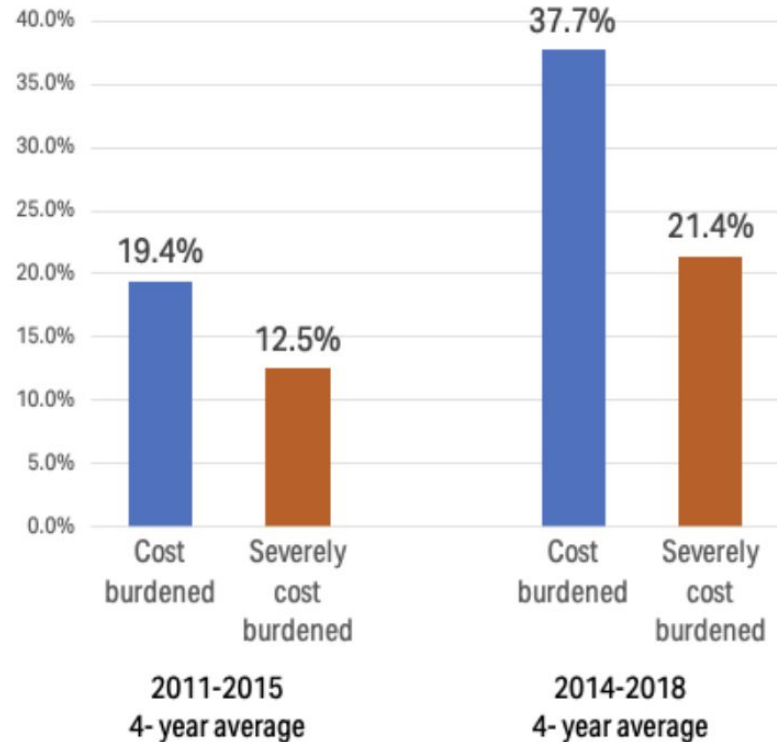
The **Coalition** for an
**Accessible and
Resilient Edmonds**

Housing affordability

38% are
cost-burdened

(> 30% of income towards housing)

Where can we improve?



Housing affordability

2014-2018		Edmonds	Snohomish County	Seattle	King County
Cost Burdened (>30% to <=50%)	Owners	13.4%	15.2%	13.9%	14.5%
	Renters	24.3%	24.0%	21.6%	21.8%
	Total	37.7%	39.2%	35.5%	36.3%
Severely Cost Burdened (>50%)	Owners	8.6%	8.3%	9.6%	9.3%
	Renters	12.8%	20.6%	21.6%	19.8%
	Total	21.4%	28.9%	31.2%	29.1%
Overall Cost Burdened	Total	59.1%	68.1%	66.7%	65.7%

Where can we improve?



The **Coalition** for an
Accessible and
Resilient Edmonds

Our public schools

- Only **50.9%** of students are meeting **English Language Arts** standards district-wide.
- Only **38.8%** of students are meeting **Math** standards district-wide.
- Only 83% of our students **graduate** from our high schools.
- Of the **five** neighborhood elementary schools within the city of Edmonds, **three** are still from the 1960s.

Edmonds **significantly underperforms** comparable districts in our region.

Where can we improve?



The **Coalition** for an
Accessible and
Resilient Edmonds

How do we substantially improve
urban development and **education**
policy to offer all residents of
Edmonds greater opportunity to
thrive?



The **Coalition** for an
Accessible and
Resilient Edmonds

How do we substantially improve
urban development **How do we ensure** education
policy **that these changes** of
Edmonds **will *endure*?** opportunity to
thrive?



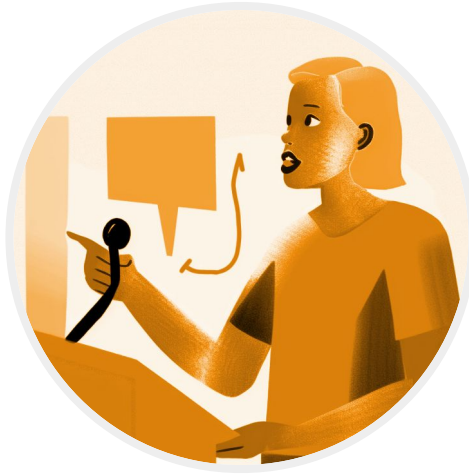
The **Coalition** for an
Accessible and
Resilient Edmonds

Our Theory of Action

Three Key Approaches



Research and
Education



Leadership and
Advocacy



Political Action



The **Coalition** for an
**Accessible and
Resilient Edmonds**

Research and Education

Exploring and sharing how our policy choices shape our community.



Informed participation is essential to a healthy democracy.

Goals

- **Research and analyze** urban development & education policy impacts.
- **Share** strategic, accurate, and timely information.
- **Convene** local stakeholders.
- **Activate** the next generation.



CARE Foundation explores policy, shares insight, and connects stakeholders.

Leadership & Advocacy

Empowering local leaders to advance good ideas.

Policy success requires a long-term coalition, pursuing system-wide action.

Goals

- **Advocate** for urban development and education policies that promote equity, sustainability and prosperity for all residents.
- **Build capacity** for promising leaders to pursue these goals.



CARE advocates for policies that advance our mission, and builds capacity for promising leaders.

Political Action

Where the rubber meets the road.



Elections matter – representatives shape policy, and policy shapes our lives!

Goals

- Support mission-aligned candidates to win office.



CARE Action Fund supports mission-aligned candidates in local elections.

CARE Structure: Overview



CARE Foundation researches policy, shares insight, and connects stakeholders.



CARE advocates for policies that advance our mission, and trains promising leaders.



CARE Action Fund supports mission-aligned candidates in local elections.

Policy Platform

Urban Development



Urban Development Policy

1. Growth in Edmonds is necessary to our success.
2. People who work here should be able to live here.
3. Growth is most comfortable when it's continuous.
4. We must be proactive to overcome our history of real estate discrimination.
5. Abundant housing benefits everyone.
6. Getting around Edmonds should be easy for 8- and 80-year-olds.

Guiding Beliefs



The **Coalition** for an
Accessible and
Resilient Edmonds

Urban Development Policy

Policy Platform

1. **Build more homes** near jobs and services (and vice versa!)
2. **Support** community-led housing development formats
3. **Advocate** for safe walking, biking and transit networks



The **Coalition** for an
Accessible and
Resilient Edmonds

Policy Platform

Education



Education Policy

1. Urban development & school performance are inextricably connected
2. External forces influence school performance
3. Internal forces influence school performance too!
4. The achievement gap persists primarily along racial & socioeconomic lines!
5. More \$\$\$ + effective spending = better student outcomes.
6. Evaluating policy: “Is the child learning?” & “How do we know?”

Guiding Beliefs



The **Coalition** for an
Accessible and
Resilient Edmonds

Education

Policy Platform

1. **Ensure high-quality instruction, a culture of high expectations, and safe learning environments** for all students.
2. **Increase communication and collaboration** between the Edmonds School District (ESD) and the City of Edmonds.
3. **Provide** 21st century facilities for 21st century learning.



The **Coalition** for an
Accessible and
Resilient Edmonds

Timeline

Where do we go from here?

FALL 2023
Workshop
policy
platform

FALL 2023
Create legal
entities

FALL 2023
Recruit boards
for each entity

2024-2025
Partner with
promising
leaders



The **Coalition** for an
Accessible and
Resilient Edmonds

How you can help

We **need** dedicated, mission-aligned individuals to **help CARE grow!**

1. **Expanding** CARE's reach
 - a. Consider hosting an information session at your home with your friends
 - b. Consider introducing CARE to friends over an informal coffee
 - c. Consider recommending individuals who may be interested in volunteer opportunities
2. **Joining** CARE's Board of Directors
3. **Contributing** financially to CARE's work



The **Coalition** for an
Accessible and
Resilient Edmonds